

MODEL DC DUPLEX STRAINER

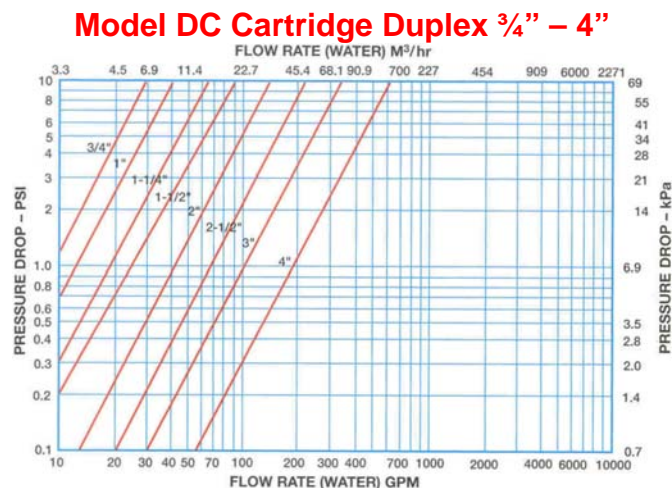
Typical Strainer Specification

The strainer shall be a twin chamber (Duplex) type, capable of handling _____ (fluid) at a flow rate of _____ (GPM) with an approximate pressure drop (clean) of _____ PSIG. The inlet velocity shall fall within the 4 to 6 FPS range at the design flow rate and operating pressure while maintaining a clean pressure drop of ≤ 2 PSI..

The strainer shall be Model DC as provided by Factory Direct Pipeline Products, Inc. and suitable to a working pressure of 200 PSI and a working temperature of 100 °F.

The strainer body shall be of cast iron, cast steel, stainless steel or bronze construction with _____" threaded OR _____" ANSI Flange inlet and outlet connections and shall have a quick opening cover for quick access to the basket chambers.

The strainer baskets shall be of stainless steel construction with _____" diameter perforated openings and (optionally) lined with _____ mesh wire cloth liner.

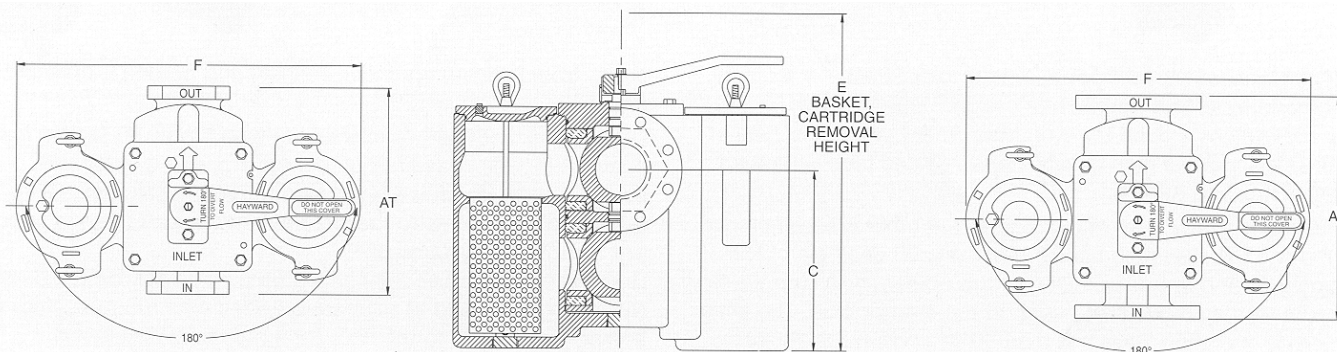


Factory Direct Pipeline Products, Inc.

<http://www.fdpp.com>

MODEL DC DUPLEX STRAINER

The customizable datasheets found online at <http://www.fdpp.com> can be used to further refine other important specifications, such as the Open Area Ratio (OAR) and Gross strainer basket area.



Pipe Size	AF	AT	C	E	F	Estimated Weight (lbs.)					
						Cast Iron		Bronze		Steel & 316SS	
						Flanged	Threaded	Flanged	Threaded	Flanged	Threaded
¾"	-	5.50	5.00	13.38	10.50	-	37	-	46	-	41
1"	6.88	5.50	5.00	13.38	10.50	42	37	52	46	47	41
1¼"	6.88	7.50	6.81	17.00	13.25	-	80	-	100	-	89
1½"	9.38	7.50	6.81	17.00	13.25	90	80	113	100	100	89
2"	10.63	10.00	8.38	21.75	17.38	167	157	209	197	185	174
2½"	10.75	10.00	8.38	21.75	17.37	183	157	229	197	203	174
3"	13.50	-	8.88	26.50	22.75	285	-	357	-	432	-
4"	16.00	-	13.25	33.00	24.75	389	-	487	-	432	-

Additional Specifications						Cv Factors			
Size	Connection	Rating	Body & Cartridge Material	Seat/Seal	Diverter Balls	Size	Value	Size	Value
¾", 1", 1¼", 1½", 2", 2½"	Threaded	125lb ANSI Flange for up to 200 PSI at 150°F	Iron	Buna- N/PPL	Stainless Steel (nickel-plating optional)	¾"	13	2"	42
1", 1½", 2", 2½", 3", 4"	Flanged					1"	13	2½"	65
¾", 1", 1¼", 1½", 2", 2½"	Threaded	150lb ANSI Flange for up to 200 PSI at 150°F	Bronze	1¼"		18	3"	110	
1", 1½", 2", 2½", 3", 4"	Flanged		Steel	1½"		25	4"	175	
			316SS	Viton					



Factory Direct Pipeline Products, Inc.

<http://www.fdpp.com>